

Livelihood for Libraries™

In many organizations, the corporate library is the primary center of knowledge. But the pressure to deliver increased levels of service, with fewer resources, demands that corporate librarians find alternative means to increase the value and visibility of their collections. From managing library resources, to automating daily library operations, they need to rapidly meet the needs of the changing library.

Integrated library management

Livelihood for Libraries (formerly Techlib®) is an integrated, Web-based solution for managing, automating, and delivering a complete range of library services. From access and cataloging to circulation, serials control and acquisitions, Livelihood for Libraries provides you with the ability to integrate physical collections with digital content and establish the library in its natural place as the focus of your organization's knowledge resources.

With powerful and precise search features, Livelihood for Libraries provides users with self-service functionality that allows them to maximize their use of the diverse collections organized by library. By providing fast, accurate access to library collections, Livelihood for Libraries ensures that library users have information they need to make better and faster decisions, develop new ideas, and accelerate the pace of innovation across your entire organization.

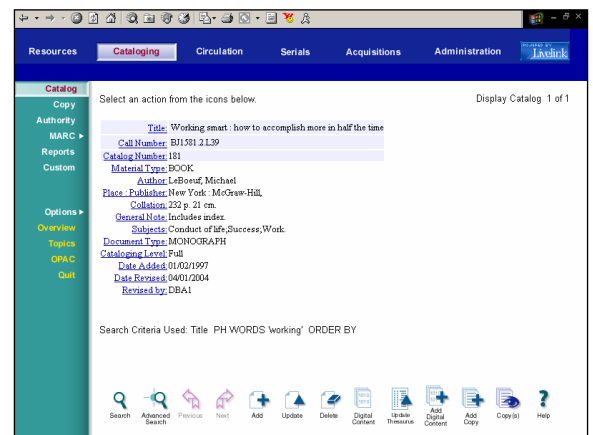
An integrated library system to automate cataloging, searching, circulation, serials control, and acquisitions functions for books and other library materials.

Modular functionality for focused performance

The core functionality of Livelihood for Libraries resides in its Cataloging component, which enables librarians to add, retrieve, update, and delete Catalog and Copy records with simple Web-based forms. This component provides interactive authority validation and the ability to establish and maintain thesaurus relationships. MARC and non-MARC data can coexist for all material types. A special Electronic Location field (MARC 856 tag) automatically activates URLs for cataloged Web resources.

Optional extensions to the Catalog and Online Patron Access Catalog for Intranets™ (OPAC) components allow you to create metadata for internal documents with links for full-text indexing, retrieval, and display. Document converters further extend your ability to manage word-processing files, presentations, spreadsheets, audio and video formats, and graphics.

Livelihood for Libraries is optimized to integrate with Livelihood Collections Server, an extended relational database system that is designed and refined for storing and accessing structured and unstructured text and documents. Livelihood Collections Server ensures the retrieval, security, validation, and data integrity of your collection. While it is fully functional out-of-the-box, Livelihood for Libraries is highly configurable and can be customized to address highly unique requirements. For daily operations, we offer a variety of modules that enhance and extend control over your digital collections. Availability of library materials is monitored using the Circulation Module. With this module you can maintain hold queues, process batch renewals, or manage indefinite loans and desk copies of items.



Automating ordering and receiving also improves your control of the collection. Livelihood for Libraries recognizes the specific processing requirements for standing orders, subscriptions and many other types of orders. The Acquisitions Module has convenient work-in-progress search and display pages to help perform pre-order searches, review pending requests, generate orders, identify claims, and process invoice payments.

Subscription maintenance can be a significant drain on library resources. Livelihood for Libraries' Serials Module receives regular, irregular, and special issues in a single step. Library staff can define publication patterns for expected issues using the flexible issue prediction page. Subscriptions ordered through the Acquisitions Module are immediately available for processing. With a variety of route types, you can achieve the appropriate mix of control and distribution.

With Livelink for Libraries, you can:

- Configure system-and library-specific parameters, including staff privileges, library locations, material types, collection types, patron types, and circulation policy.
- Support value-added content such as document full text, reviews, cover art, and tables of contents.
- Ensure data integrity in cataloging with authority control implemented via an ANSI standard thesaurus.
- Add optional modules (circulation, serials control, and acquisitions) that are fully integrated around the single bibliographic database.
- Provide maximum flexibility to meet local reporting needs using report templates; the standard report toolkit uses Crystal Reports.

Building a Web-based library

Making the library catalog accessible through a common Web browser enables users to access information quickly and conveniently. The Livelink for Libraries OPAC gives library and computer novices the ability to search for words and phrases in catalog records or within the text of electronic documents. Advanced search options are also available to deliver the highest degree of search precision possible. Search assistants include interactive thesaurus look-up and index browsing with term selection. OPAC is highly secure and provides Livelink for Libraries users with sophisticated full-text and field-level searching. Item request options assure that users will receive required information whether it is in electronic or print form.

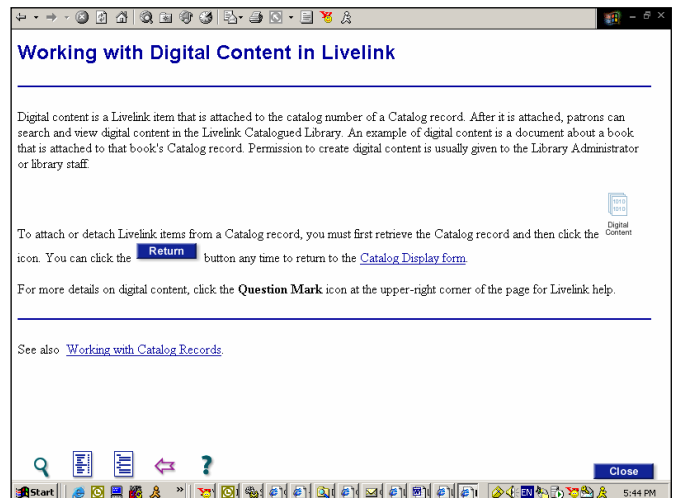
Reliable customer support

Livelink for Libraries is developed by industry experts who understand the needs of both librarians and technical professionals. In order to make certain that Livelink for Libraries meets the needs of our customers, we maintain several support mechanisms. Our Technical Support Center, the Product Support Group, Professional Services, and Educational Services all help each customer maximize their investment in Livelink for Libraries and their document collections.

High performance architecture

Livelink for Libraries employs a three-tiered architecture. The client interface is a standard Web browser for library staff and users, making maintenance simple and cost-effective for system administrators. The middle tier, a Windows application server, provides the business rules and application logic for library services.

The bottom tier is composed of the database server running Livelink Collections Server on Hewlett-Packard HP-UX, Sun Solaris, IBM AIX, Alpha VMS or Windows. Livelink for Libraries uses the Microsoft Active Server Platform and Active Server Pages to deliver flexible HTML-based applications that include embedded and reusable script logic that executes on the server rather than the client.



Transform your document collection into a corporate knowledge center

When combined with Livelink Enterprise Server, the leading collaboration and content management software for global organizations, Livelink for Libraries transforms your library into a part of every knowledge-based decision and innovation. With Livelink Enterprise Server and Livelink for Libraries, users have consolidated access to knowledge resources on the intranet and in the corporate library to support decisions, streamline workflow, and automate processes.

Integration of Livelink for Libraries with Livelink Enterprise Server empowers research scientists to unite all relevant resources—print, electronic, saved searches, or URLs—in a common, collaborative repository. They can also attach digital content to bibliographic records or participate in discussions linked to cataloged resources. These discussions might review published materials, report subsequent research, or suggest new applications of a research methodology. This new environment facilitates knowledge discovery and stimulates structured collaboration associated with cataloged resources. The integration with Livelink Enterprise Server significantly extends the functionality of the library catalog and the reach of the library by making it an integral part of the enterprise knowledge architecture.

Livelink-for-Libraries-enhanced corporate intranets facilitate knowledge discovery while Livelink Enterprise Server promotes structured collaboration. Together they provide organizations with a powerful solution to develop ideas and innovative products and services.

www.opentext.com
info@opentext.com

North America Sales
1-800-499-6544

International Sales
+800-4996-5440

Americas
2100 Tri-State International Parkway
Lincolnshire, IL
USA 60069
Phone: 847-267-9330
Fax: 847-267-9332

Europe
Webster House
22 Wycombe End
Beaconsfield, Buckinghamshire
England HP9 1NB
Phone: +44 1494 679700
Fax: +44 1494 679707

Asia/Pacific
138 Harris Street
Pymont, NSW 2009
Australia
Phone: +61-2-9552-3334
Fax: +61-2-9552-3446



ID_TECHNOLOGY

ID Technology è affinity partner di Open Text Corp. dal 1998.

Nell'ambito della partnership ID Technology ha sviluppato le applicazioni **Livelink Learning Management** e **Livelink Skill Management** utilizzate oggi da importanti realtà internazionali (Shell, Vodafone, Visa,...).

Forte di un'esperienza ampiamente consolidata non solo sugli aspetti tecnologici, ma anche progettuali e strategici, ID Technology offre servizi di consulenza, distribuzione, sviluppo, supporto tecnico e formazione sull'intera gamma di prodotti Open Text attraverso i suoi Professional & Technical Services.

I Professional Services operano a fianco dei clienti per identificare le esigenze a breve e a lungo termine, disegnare ed implementare le soluzioni più idonee a soddisfare tali esigenze e gestire le infrastrutture in modo ottimale.

I Technical Services offrono un programma di manutenzione e supporto tecnico solitamente regolamentato da appositi Service Level Agreement concordati con il cliente.

www.idtech.it

Per informazioni:

ID Technology

Milano

Headquarter
Corso di Porta Romana, 6
20122
t +39 02 80 51 131
f +39 02 80 51 163

Roma

Via G. Bettolo, 3
00195
t +39 06 37 29 945
f +39 06 37 51 83 28

Cosenza

Via Sabotino, 55
87100 Cosenza
t +39 0984 21 842